



# YOUR SHIPPING EXPERT

2023

*This document and its contents are the property of TDI.  
Any disclosure or reproduction is forbidden without written authorization from TDI.*



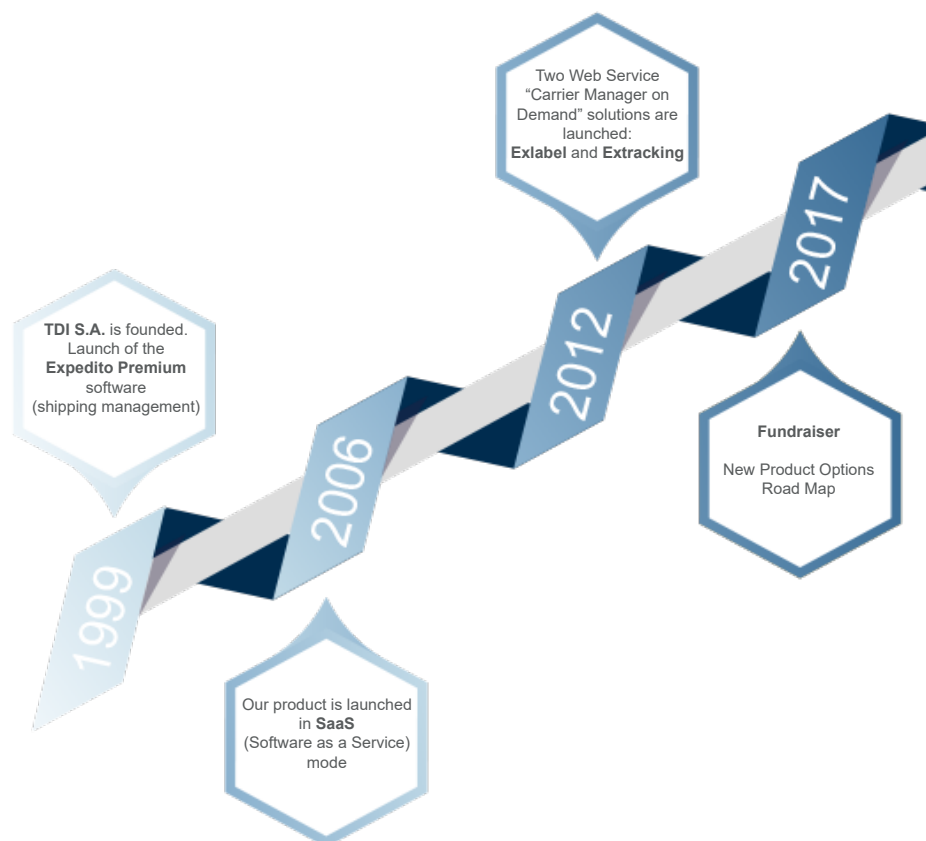
# ABOUT TDI

## OUR HISTORY

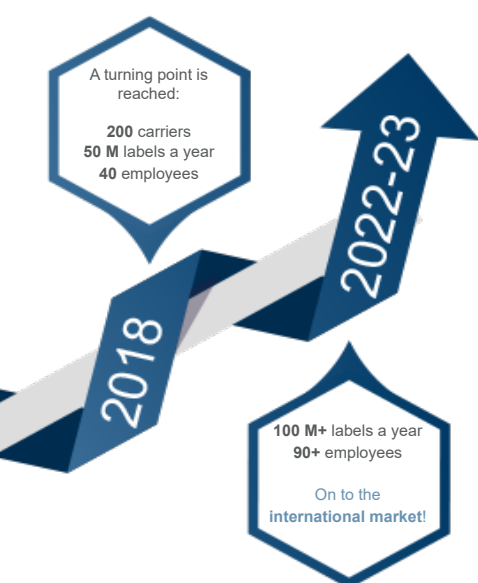
TDI is a people-oriented company born out of an idea: centralizing management of shipping-related information in a one-stop solution.

Didier Guichard, a visionary entrepreneur with roots in the transport sector, founded TDI in 1999.

His aim? To provide a solution that could generate shipping labels and transmit data, in electronic data interchange (EDI) format, from any national or international carrier to individual shippers.



# TDI, YOUR TRUSTED PARTNER SINCE 1999



“

*TDI is a forward-thinking partner for anyone who uses carriers, helping you optimise and consolidate your national and international shipping management.*

Didier Guichard  
CEO of TDI



”

## THE VALUES THAT DRIVE US

### PROFESSIONALISM

Our know-how and skills are reflected in everything we do.

### COMMITMENT

Built on a results-based culture, TDI understands your needs and meets your expectations.

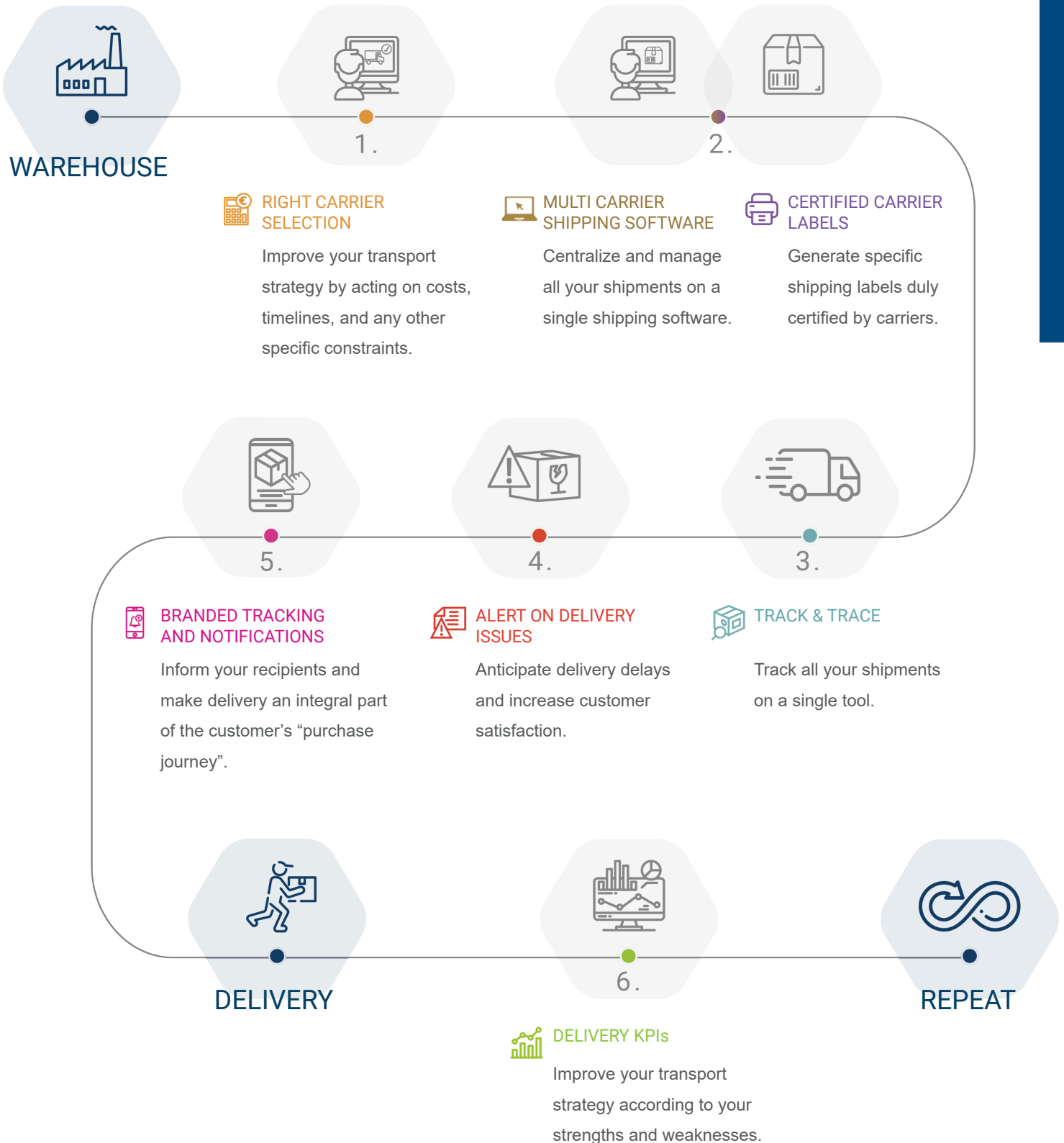
### RELIABILITY

Our credibility and consistency have won the loyalty of our customers.

### CUSTOMER SATISFACTION

Customer satisfaction is at the heart of our concerns.

# OUR SOLUTIONS







## MULTI CARRIER SHIPPING SOFTWARE

Centralize and manage all your shipments  
on a single software!



### INTEGRATION OF SHIPPING INFORMATION

Expedito Premium allows you to integrate **shipping information** automatically (via web service calls or file exchanges), semi-automatically, or manually.



### SHIPMENT CONSOLIDATION

With this module, you can **consolidate multiple shipments** with the same recipient and shipping criteria into a single shipment.



### GENERATING LABELS & SHIPPING DOCUMENTS

Generate and print **labels and certified documents** for all your carriers using a single shipping management software: delivery notes, waybills, customs declarations.



### DELIVERY ADDRESS CHECKS

Expedito Premium automatically makes changes related to **delivery addresses** and performs **consistency checks** between the entered postal code and the associated municipality.

## Why choose Expedito Premium?



**Shared tool**  
for all carriers



**Labels and EDI files**  
certified by carriers



**3 modes**  
of shipment  
data entry



Reduction of your  
**transport budget**



**Full SaaS**  
solution



# EXLABEL

— by TDI —

## CERTIFIED CARRIER LABELS

Generate shipping labels certified as compliant by the carriers!



### GENERATING CERTIFIED LABELS

Connect Exlabel to your Information System and automatically **generate certified labels** for a wide range of French and international carriers.



### GENERATING TRANSPORT DOCUMENTS

Exlabel allows you to **generate a range of transport documents** according to your operational and logistical needs: delivery notes, waybills, customs declarations (CN23).



### FILE EXCHANGE WITH CARRIERS VIA EDI

When your shipment is ready, **inform the different carriers**.



## Why choose Exlabel?



**Automation**  
of label editing



**Labels and documents**  
certified by carriers



Integration with  
**major WMS/ERP**



**Speed, power,**  
and industrial  
**performance**



**Cost-effective**  
solution

# EXTRACKING

by TDI

## TRACK & TRACE

Follow the shipment progress of all your deliveries using a single tool!



### HISTORY OF TRACKING EVENTS

**Retrieve all tracking events** for each shipment and trace your shipments' routes.



### COLLECTION OF TRACKING EVENTS

Extracking gathers all **EDI (Electronic Data Interchange) files** containing your **shipments' tracking information** from your carriers' systems and transmits them to yours.



### PROOFS OF DELIVERY (POD) AVAILABLE VIA URL

After your shipment has been successfully delivered, Extracking provides you with all the **POD (Proofs Of Delivery)** issued by carriers.

## Why choose Extracking?



**Traceability**  
of multi-carrier  
shipments



**Shared tool**  
for all carriers



Integration with  
**major WMS/ERP**



Fully  
**web-based**  
solution



**Cost-effective**  
solution

## DELIVERY KPIs

Enhance your transportation strategy according to your strengths and weaknesses!



### CUSTOMIZABLE GRAPHS

**Adapt graphs** according to your specific needs.  
**Refine your analysis** based on geographical zone (region or country), desired time period, or chosen criteria.



### TRANSPORT PERFORMANCE ANALYSIS

This module presents a library of **KPIs (Key Performance Indicators)** geared to measure carrier performance. Experform allows you to evaluate the service rate, average delivery times, and the rate of non-compliant deliveries (delays, undelivered packages, etc.).



### DATA EXPORT TO YOUR IS

**Export Experform data** to your Information System and continue your analysis independently.

## Why choose Experform?



**Targeted analysis**  
of transport  
governance



**Decision support**  
tool



Highlights  
**strengths and  
weaknesses**



Improvement of  
**transport strategy**



**Enhanced  
communication**  
with carriers



# EXWARNING

by TDI

## ALERT ON DELIVERY ISSUES

Anticipate delivery delays and increase customer satisfaction!



### SORTING OF SHIPMENTS BY RISK LEVEL

Exwarning assesses all your shipments in transit and highlights **anomalies** based on customizable risk levels. **Gain in visibility and proactivity** by filtering your shipments according to their risk of delay.



### ALERT CUSTOMIZATION

Exwarning allows you to **create and adapt alerts** according to your needs. Each notification is defined by its content, triggering conditions, and delivery method.



### AUTOMATION AND SCHEDULING OF ALERTS AND NOTIFICATIONS

**Automate and schedule all your alerts** and notifications in advance. Use alerts to implement suitable and effective preventive or **corrective actions**.



## Why choose Exwarning?



**Anticipation**  
of delivery delays



**Prompt resolutions**  
with your carriers



**Close connection**  
with customer  
service



**Increased**  
**customer**  
**satisfaction**



**Enhancement**  
of your  
**brand image**

# EXPRICING

by TDI

## RIGHT CARRIER SELECTION

Optimize your transport management!



### MANAGE ALL YOUR TARIFFS

With Expricing, **manage all your current and future rate grids** and provide information on all options, services, and supplements associated with your transportation services.



### CONTROL OVER DELIVERY TIMELINES

**Define your locations**, remote or difficult-to-access areas in Expricing, and **adapt your carrier choice** according to each situation.



### CARRIER RESTRICTION MANAGEMENT

Expricing allows you to take into account all the **restrictions defined by your carriers** and **adjust your choices** accordingly.



### TIMELINE & COST CALCULATOR

Expricing provides you with a tool to **calculate delivery timelines and prices**, allowing you to compare and evaluate eligible services based on pre-selected criteria.

## Why choose Expricing?



**Shared tool**  
for all carriers



**Decision support**  
tool



Interfaced with  
**any Information**  
**System (IS)**



Reduction of your  
**transport budget**



Improvement of  
**transport strategy**

## BRANDED TRACKING AND NOTIFICATIONS

Inform your customers and integrate delivery into the customer's "purchase journey"!



### SENDING NOTIFICATIONS BY EMAIL

Configure and schedule **email notifications** for status changes and shipment tracking, establishing a privileged connection with your recipients. **Keep your recipients informed** at each key stage of shipment and enhance consumer experience.



### TRACKING PAGE CUSTOMIZATION

Stand out with a **fully customized tracking page** (Livetrack) that reflects your brand, regardless of the chosen carrier!

Use delivery as a differentiating factor in the customer journey.



### NOTIFICATION CUSTOMIZATION

**Create and personalize notifications** that align with your brand and graphic guidelines.

**Customize your communications** and integrate them into your marketing campaigns.



## Why choose Exintouch?



**Customizable tracking** in line with your identity



Integration with the **customer journey**



Enhanced **user experience**



Alignment with **seasonal marketing**



Encourages **purchases and customer loyalty**





# INTEGRATED CARRIERS

Since its inception, TDI has developed close relationships with over **260 French and international carriers** (mostly the "Courier" category : traditional and fast, express, single-package). By integrating their technical specifications, TDI continuously enriches its library of specific labels and EDI (Electronic Data Interchange), currently comprising more than **920 transport services**.







This list, for informational purposes, is not exhaustive.



# REFERENCES

MISTER  
AUTO

LONGCHAMP  
PARIS

Auchan.fr

my  
m&m

SP  
SIMONE PÉRÈLE  
PARIS

ID  
LOGISTICS

BUT

weldom  
ensemble, c'est mieux

FM LOGISTIC

LEROYMERLIN

spartoo  
TOUTE LA MODE À VOS PIEDS

OSCARO

alinea

XPOLogistics

SAINT-GOBAIN  
POINT.P  
Matériaux de Construction

PILOT

snow  
leader  
the rebellion company

ekosport.fr  
OUTDOOR EQUIPMENT

Our clientele consists of numerous leading companies from various strategic fields of activity:



## THEY TESTIFY ABOUT THEIR EXPERIENCE...

"Thanks to its expertise, customer proximity, and the responsiveness of its team, TDI is able to support us in this major challenge [management of labels and shipping documents]."

Director of Distribution & External Logistics - **LA REDOUTE**

.....

"Expedito integrates a large number of carriers, allowing us to switch providers according to our needs and easily conduct calls for tender."

Import & Transport Manager - **THE KOOPLES**

.....

"Working with TDI brings the advantage of their professionalism and logistics knowledge."

IT Manager - **VEDIA**

.....

"We've noticed real benefits from implementing Expedito, a tool that allows us to work with our different partners using a single interface."

Logistics Expert - **GROUPE ATLANTIC**

.....

"We chose TDI's products because they offer a range of complete and intuitive [carrier] management solutions."

Deputy Site Manager - **TIVOLY**

.....

"TDI is a facilitator that offers an extensive catalogue of carriers and quick deployments. Thanks to their Experform module, we are able to focus our work with carriers on operational errors and take action to correct them."

Sales Director - **MISTER AUTO**

.....

"Our partnership with TDI is part of a long-lasting project that we are all proud of."

Supply Chain Director - **V33**

.....



**TDI**

Europarc du Chêne  
10 rue Edison  
69500 BRON

Phone: +33 (0)4 72 04 03 33

[www.tdi-group.com](http://www.tdi-group.com)

FOLLOW US:

